

**2024**  
PRODUCT CATALOG



**SENSATIONS**  
LIMITLESS DESIGN BY SYNTEC

 **SYNTEC<sup>®</sup>**



We Design.  
We Create.  
We Perform.



Fiber has higher expectations than ever before. It needs to have an aesthetic quality, visual interest and tactile hand, while providing unparalleled performance and durability.

We believe that design is most successful when the manufacturing process is paired with a clear performance intent. Whether it's a problem to be solved or an objective to be met, good design is an everlasting pursuit.

It's why we work diligently at the production level to understand – and ultimately influence – how our materials will perform in their environment.

We offer the industry more personalization in designs and colors to ensure our flooring always suits you.





Sensations by Syntec delivers exceptional performance, stunning aesthetics, and a comfortable tactile experience. Available in a variety of patterns, this unique material looks beautiful on any boat, yet is tough enough to weather any condition.

Sensations isn't just functional, it's also beautiful. Available in a variety of unique and eye-catching patterns, Sensations offers style that goes the extra nautical mile. Because Sensations is tough enough to weather the rigors of boating and natural elements like rain and sun, its good looks won't fade over time.

### What is Sensations?

Sensations is a woven vinyl textile produced on state of the art Jacquard looms. Woven in both 8'6" and 12' widths, Sensations can accommodate multiple flooring widths.

The fabric begins as a polyester core that runs through an extrusion process where it is coated with a PVC resin. It's this PVC coating that makes the product durable allowing it to perform under the harsh elements experienced in the great outdoors.

The PVC coating paired with the density at which the fabric is woven provides strength and dimensional stability making Sensations the ideal flooring solution for the boating and marine industry.

- Resistant to mold, mildew, tearing, and abrasion
- Withstands 3,000 hours of UV exposure
- Meets 302 flammability requirements
- Resists negative effects from Ozone and most chemicals



### Refined Color

Sensations Woven PCV textiles deliver exceptional performance, stunning aesthetics and a comfortable, tactile experience. Produced on Jacquard looms, our intricate patterns blend rich textures with a refined color palette.

Syntec is proud to feature Sensations patterns that truly push design boundaries, taking their inspiration from ocean surfaces, industrial metallics, sculptural shapes and teak wood favorites.

In combination with beautiful color choices and an attention to luxurious detail, Sensations boldly leaps forward as an innovative enhancement to your nautical masterpiece.

For custom designs and colors, contact your Sensations Sales Representative by calling **800-526-8428**, or by email at [syntecinfo@syntecind.com](mailto:syntecinfo@syntecind.com).



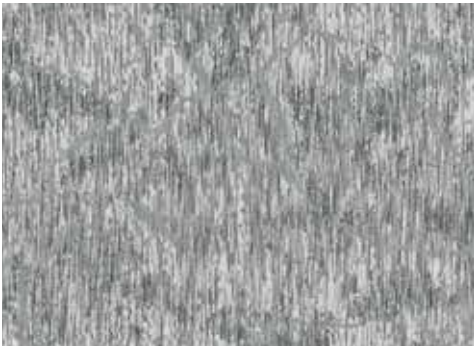




Aurora, Eden 13078



Aurora, Atlas 08111



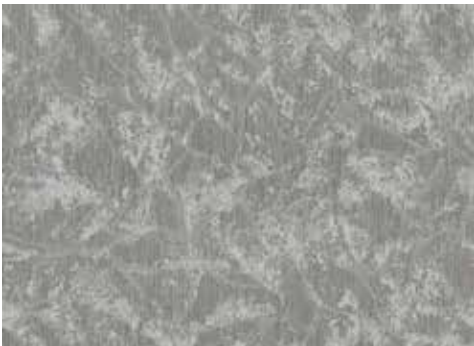
Aurora, Celestial 13110



Aurora, Eden 13078



Aurora, Mercury 13109



Aurora, Nova 13108

# AURORA

**SPECIFICATIONS:**

Standard Width	8' 6"
Standard Length	~ 155' roll (Roll length varies)

**PERFORMANCE TESTING:**

**FVMSS & CMVSS 302 Flammability Test**  
Meets or exceeds Federal Motor Vehicle  
Safety Standard No. 302

**ASTM D-5252 Hexapod Drum Test**  
Exceeds Heavy Commercial Traffic Rating

**ASTM D-3884 Abrasion Resistance Test**  
Abrasion Resistance

**ASTM C-1028 Coefficient of Friction  
(Slip Resistance) Test**  
Slip resistant and ADA Compliant

**ASTM F-925 Stain Resistance to Chemicals**  
Zero effect or staining when exposed to chemical staining test

*Just as enticing as the dancing northern lights, is the subtle pattern that waltzes across Sensations' Aurora. The Milky Way appears from behind the colorful curtains in this beautiful and organic pattern.*





Cavalier, Alumina 13072



Cavalier, Caraway 08054



Cavalier, Coastal Fog 17023



Cavalier, Grey Oxide 01073



Cavalier, Linen 17033



# CAVALIER

## SPECIFICATIONS:

Standard Width 8' 6"  
Standard Length ~ 155' roll (Roll length varies)

## PERFORMANCE TESTING:

**FVMSS & CMVSS 302 Flammability Test**  
Meets or exceeds Federal Motor Vehicle  
Safety Standard No. 302

**ASTM D-5252 Hexapod Drum Test**  
Exceeds Heavy Commercial Traffic Rating

**ASTM D-3884 Abrasion Resistance Test**  
Abrasion Resistance

**ASTM C-1028 Coefficient of Friction  
(Slip Resistance) Test**  
Slip resistant and ADA Compliant

**ASTM F-925 Stain Resistance to Chemicals**  
Zero effect or staining when exposed to chemical staining test

*Dynamic intersecting lines create the illusion of shade and provide texture in Cavalier. Featuring the robust durability of woven fabrics, this unique interplay produces deep tones and distinctive dimensionality. Cavalier adds elegance and tactility to a surface that can sometimes be regarded as utilitarian.*



Cavalier, Coastal Fog 17023



## CROSSHATCH

### SPECIFICATIONS:

Standard Width 8' 6"  
Standard Length ~155' roll (Roll length varies)

### PERFORMANCE TESTING:

**FVMSS & CMVSS 302 Flammability Test**  
Meets or exceeds Federal Motor Vehicle  
Safety Standard No. 302

**ASTM D-5252 Hexapod Drum Test**  
Exceeds Heavy Commercial Traffic Rating

**ASTM D-3884 Abrasion Resistance Test**  
Abrasion Resistance

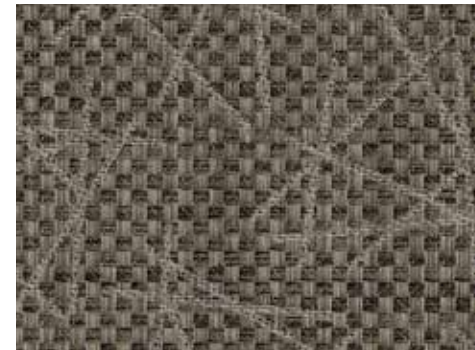
**ASTM C-1028 Coefficient of Friction  
(Slip Resistance) Test**  
Slip resistant and ADA Compliant

**ASTM F-925 Stain Resistance to Chemicals**  
Zero effect or staining when exposed to chemical staining test

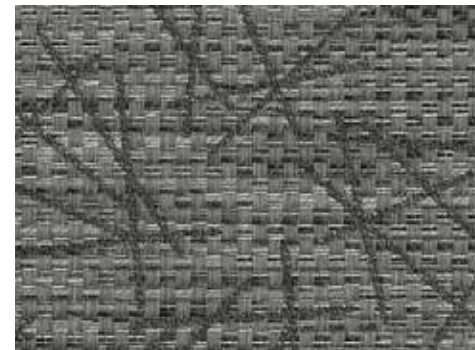
*Crosshatch is the perfect choice for today's active lifestyles! Five colorations featuring variable tonal affects with a striking crosshatch pattern above it. Much as the randomly perfect stems on nature's floor, Crosshatch sets a perfect canvas for any recreational vehicle.*



Crosshatch, Tempered Gray 01134



Crosshatch, Basin 08132



Crosshatch, Reactive 31135



Crosshatch, Tawny 27136



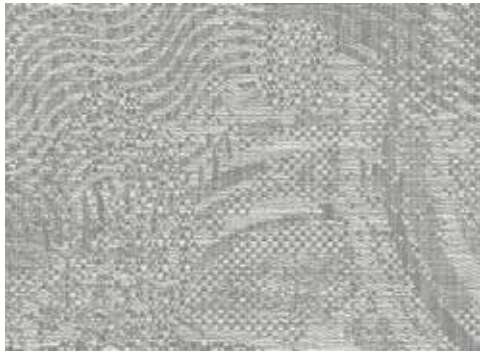
Crosshatch, Tempered Gray 01134



Crosshatch, Twilight 35133







Equinox, Cool Gray 01112



Equinox, Midnight 31144



Equinox, Natural Taupe 17139



Equinox, Reflection 35146



Equinox, Wetland Clay 088147



## EQUINOX

### SPECIFICATIONS:

Standard Width 8' 6"  
Standard Length ~155' roll (Roll length varies)

### PERFORMANCE TESTING:

**FVMSS & CMVSS 302 Flammability Test**  
Meets or exceeds Federal Motor Vehicle  
Safety Standard No. 302

**ASTM D-5252 Hexapod Drum Test**  
Exceeds Heavy Commercial Traffic Rating

**ASTM D-3884 Abrasion Resistance Test**  
Abrasion Resistance

**ASTM C-1028 Coefficient of Friction  
(Slip Resistance) Test**  
Slip resistant and ADA Compliant

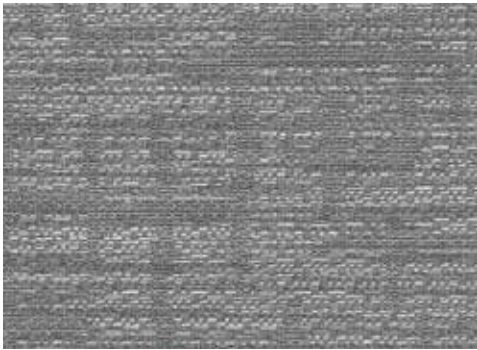
**ASTM F-925 Stain Resistance to Chemicals**  
Zero effect or staining when exposed to chemical staining test

*The overlapping circular pattern of Equinox mimics the random  
beauty of nature, conjuring memories of a rainy day at the lake.*



Equinox, Wetland Clay 088147

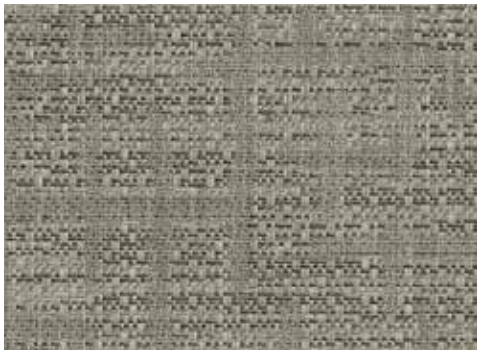




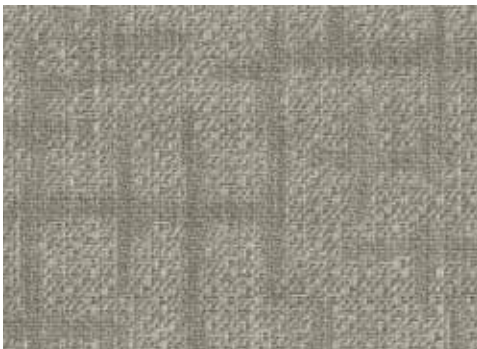
Evolution, Alloy 31105



Evolution, River's Edge 08100



Evolution, Rugged Coast 17099



Evolution, Sandy Cove 17098



Evolution, Stardust 17097



**SENSATIONS**  
LIMITLESS DESIGN BY SYNTEC

# EVOLUTION

## SPECIFICATIONS:

Standard Width 8' 6"  
Standard Length ~155' roll (Roll length varies)

## PERFORMANCE TESTING:

**FVMSS & CMVSS 302 Flammability Test**  
Meets or exceeds Federal Motor Vehicle  
Safety Standard No. 302

**ASTM D-5252 Hexapod Drum Test**  
Exceeds Heavy Commercial Traffic Rating

**ASTM D-3884 Abrasion Resistance Test**  
Abrasion Resistance

**ASTM C-1028 Coefficient of Friction  
(Slip Resistance) Test**  
Slip resistant and ADA Compliant

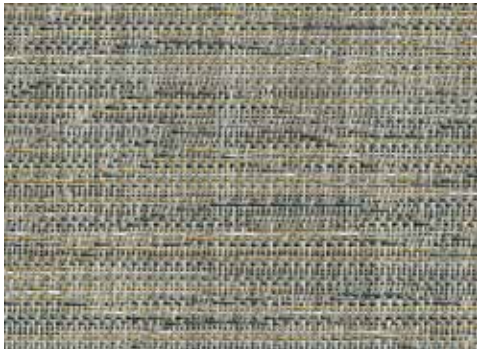
**ASTM F-925 Stain Resistance to Chemicals**  
Zero effect or staining when exposed to chemical staining test

*The beauty of nature is a gift that fosters appreciation  
and gratitude.*

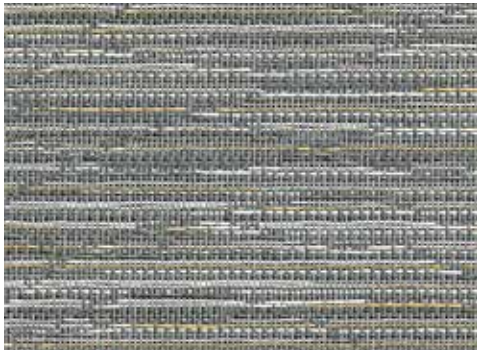
*~Louie Schwartzberg*



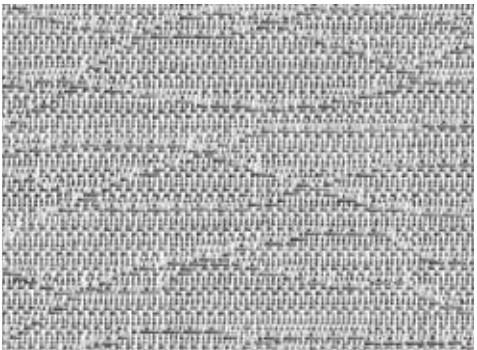




Highlands, Eclipse 17101



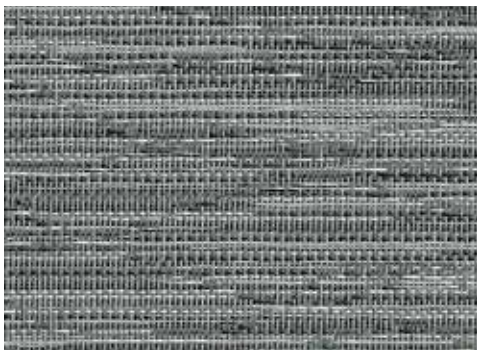
Highlands, Horizon 31074



Highlands, Shoreline 13091



Highlands, Stone Harbor 13092



Highlands, Tungsten 34073



## HIGHLANDS

### SPECIFICATIONS:

Standard Width	8' 6"
Standard Length	~155' roll (Roll length varies)

### PERFORMANCE TESTING:

**FVMSS & CMVSS 302 Flammability Test**  
Meets or exceeds Federal Motor Vehicle  
Safety Standard No. 302

**ASTM D-5252 Hexapod Drum Test**  
Exceeds Heavy Commercial Traffic Rating

**ASTM D-3884 Abrasion Resistance Test**  
Abrasion Resistance

**ASTM C-1028 Coefficient of Friction  
(Slip Resistance) Test**  
Slip resistant and ADA Compliant

**ASTM F-925 Stain Resistance to Chemicals**  
Zero effect or staining when exposed to chemical staining test

*Floors take on the look of an organic feel with the look of reeds  
in a pond. Inspired by the natural world, this pattern gives any  
surface a dimensional look with little effort.*



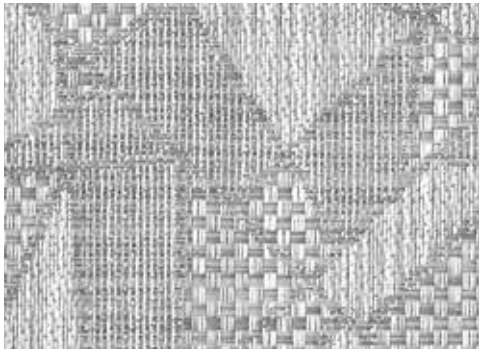
Highlands, Stone Harbor 13092





## Jubilation, Ridgeline 17076

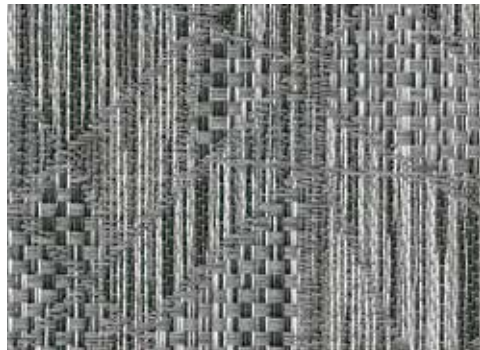




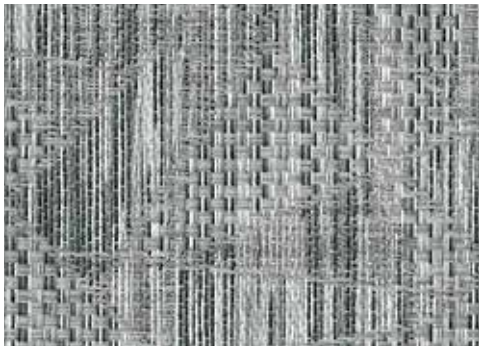
Kaleidoscope, Cool Gray 01112



Kaleidoscope, Khaki 17143



Kaleidoscope, Nickel 31067



Kaleidoscope, Radiant 01075



Kaleidoscope, Wetland Clay 08095



**SENSATIONS**  
LIMITLESS DESIGN BY SYNTEC

# KALEIDOSCOPE

**SPECIFICATIONS:**

Standard Width                      8' 6"  
Standard Length                    ~155' roll (Roll length varies)

**PERFORMANCE TESTING:**

**FVMSS & CMVSS 302 Flammability Test**  
Meets or exceeds Federal Motor Vehicle  
Safety Standard No. 302

**ASTM D-5252 Hexapod Drum Test**  
Exceeds Heavy Commercial Traffic Rating

**ASTM D-3884 Abrasion Resistance Test**  
Abrasion Resistance

**ASTM C-1028 Coefficient of Friction  
(Slip Resistance) Test**  
Slip resistant and ADA Compliant

**ASTM F-925 Stain Resistance to Chemicals**  
Zero effect or staining when exposed to chemical staining test

*A variegated changing pattern creates a contemporary geometric  
of irregular lines and angles in the Kaleidoscope pattern.*



Kaleidoscope, Wetland Clay 08095



# OASIS

**SPECIFICATIONS:**

Standard Width	8' 6"
Standard Length	~ 155' roll (Roll length varies)

**PERFORMANCE TESTING:**

**FVMSS & CMVSS 302 Flammability Test**  
Meets or exceeds Federal Motor Vehicle  
Safety Standard No. 302

**ASTM D-5252 Hexapod Drum Test**  
Exceeds Heavy Commercial Traffic Rating

**ASTM D-3884 Abrasion Resistance Test**  
Abrasion Resistance

**ASTM C-1028 Coefficient of Friction  
(Slip Resistance) Test**  
Slip resistant and ADA Compliant

**ASTM F-925 Stain Resistance to Chemicals**  
Zero effect or staining when exposed to chemical staining test

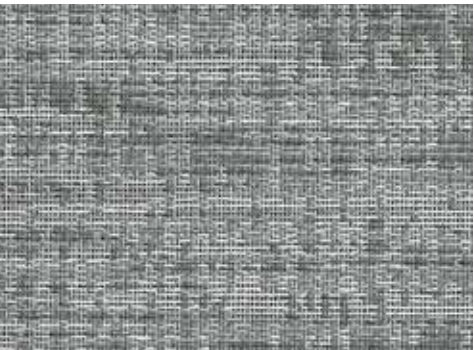
*A complex weave structure punctuated by elegant stria helps  
shifting sand create a harmonious environment through use of  
eternal texture and pattern.*



Oasis, Eden 13078



Oasis, Frontier 17079



Oasis, Gravity 34082



Oasis, Journey 08080



Oasis, Skyscape 01081







Off-Grid, Backcountry 17096



Off-Grid, Journey 08080



Off-Grid, Snowcapped 13094



Off-Grid, Southern Moss 12093



Off-Grid, Wetland Clay 08147



# OFF-GRID

**SPECIFICATIONS:**

Standard Width                      8' 6"  
Standard Length                    ~155' roll (Roll length varies)

**PERFORMANCE TESTING:**

**FVMSS & CMVSS 302 Flammability Test**  
Meets or exceeds Federal Motor Vehicle  
Safety Standard No. 302

**ASTM D-5252 Hexapod Drum Test**  
Exceeds Heavy Commercial Traffic Rating

**ASTM D-3884 Abrasion Resistance Test**  
Abrasion Resistance

**ASTM C-1028 Coefficient of Friction  
(Slip Resistance) Test**  
Slip resistant and ADA Compliant

**ASTM F-925 Stain Resistance to Chemicals**  
Zero effect or staining when exposed to chemical staining test

*Off-Grid patterns are reminiscent of a softened camouflage that appropriates repeating organic shapes found in nature. Available in four colors, similar to those found in popular hunting and fishing apparel.*

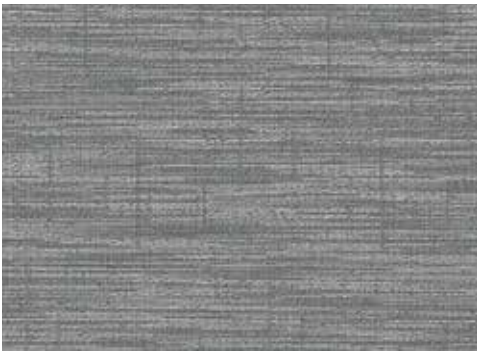


Off-Grid, Backcountry 17096

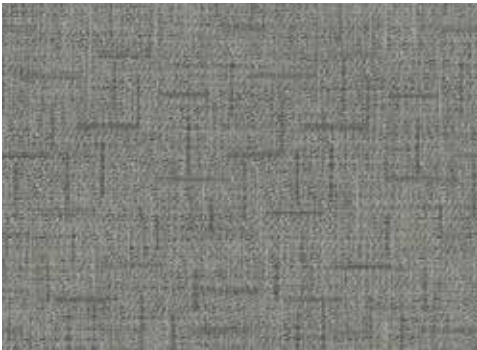




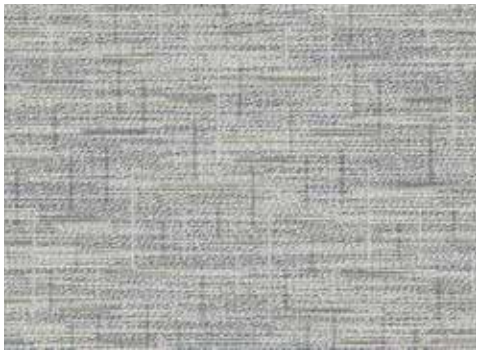




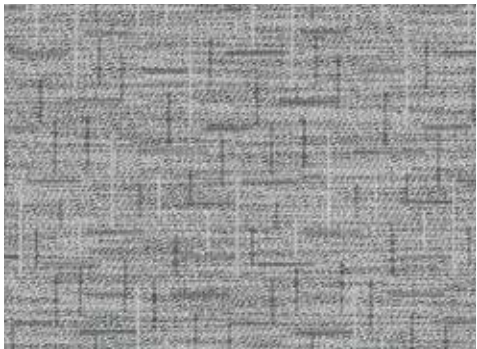
Tickles, Alloy 31105



Tickles, Backcountry 17096



Tickles, Infusion 13077



Tickles, Stone Harbor 13092



Tickles, Wetland Clay 08095



# TICKLES

**SPECIFICATIONS:**

Standard Width                      8' 6"  
Standard Length                    ~ 155' roll (Roll length varies)

**PERFORMANCE TESTING:**

**FVMSS & CMVSS 302 Flammability Test**  
Meets or exceeds Federal Motor Vehicle  
Safety Standard No. 302

**ASTM D-5252 Hexapod Drum Test**  
Exceeds Heavy Commercial Traffic Rating

**ASTM D-3884 Abrasion Resistance Test**  
Abrasion Resistance

**ASTM C-1028 Coefficient of Friction  
(Slip Resistance) Test**  
Slip resistant and ADA Compliant

**ASTM F-925 Stain Resistance to Chemicals**  
Zero effect or staining when exposed to chemical staining test

*Reminiscent of foaming water currents or mineral-specked  
swirls of stone, Tickles is designed to calm and refresh—  
providing a much needed escape from the hectic rush of  
daily life.*



Tickles, Wetland Clay 08095



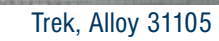
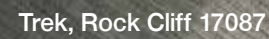


### SPECIFICATIONS:

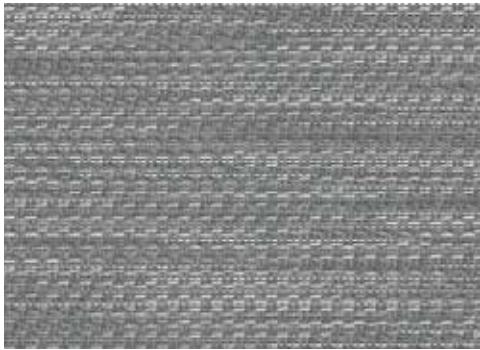
## PERFORMANCE TESTING:

**ASTM F-925 Stain Resistance to Chemicals**  
Zero effect or staining when exposed to chemical staining test

*Creative and wispy patterning creates a look one may truly encounter on an afternoon trek. A large grove of trees blowing in the wind. A mingling of fallen branches on a forest floor. Many visions of nature are expressed in this lovely looking and performance driven style.*







Urban Weave, Alloy 31105



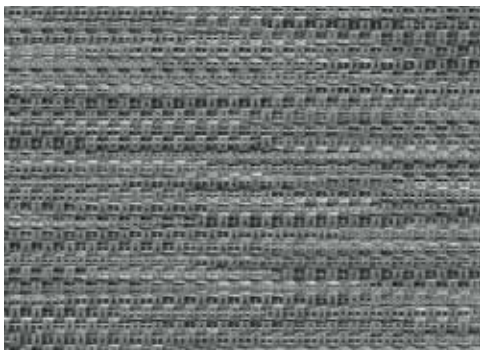
Urban Weave, Alumina 13072



Urban Weave, Mainland 17084



Urban Weave, Ridgeline 17076



Urban Weave, Tungsten 34073



**SENSATIONS**  
LIMITLESS DESIGN BY SYNTEC

## URBAN WEAVE

### SPECIFICATIONS:

Standard Width 8' 6"  
Standard Length ~155' roll (Roll length varies)

### PERFORMANCE TESTING:

**FVMSS & CMVSS 302 Flammability Test**  
Meets or exceeds Federal Motor Vehicle  
Safety Standard No. 302

**ASTM D-5252 Hexapod Drum Test**  
Exceeds Heavy Commercial Traffic Rating

**ASTM D-3884 Abrasion Resistance Test**  
Abrasion Resistance

**ASTM C-1028 Coefficient of Friction  
(Slip Resistance) Test**  
Slip resistant and ADA Compliant

**ASTM F-925 Stain Resistance to Chemicals**  
Zero effect or staining when exposed to chemical staining test

*A beautifully casual interpretation of a number of woven patterns, in an elegantly woven floor! The subtle striations offer the perfect match for many colors in vehicle embellishments. Urban Weave's soil and spill hiding ability make it an adventurer's dream in recreational flooring.*



Urban Weave, Alumina 13072



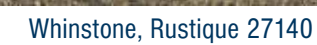
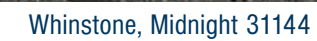
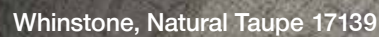


### SPECIFICATIONS:

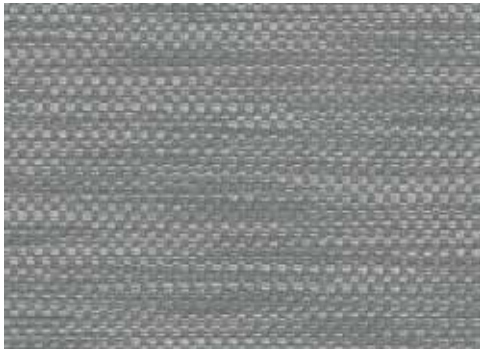
## PERFORMANCE TESTING:

**ASTM F-925 Stain Resistance to Chemicals**  
Zero effect or staining when exposed to chemical staining test

*A tonal study, with a soft marbled visual, evoke memories of a changing terrain or sedimentary landscape. Grainy weaves, in varying undertones, add to its uniqueness and extreme versatility! Earthy neutral colorations offer an excellent palette for furnishing choices.*







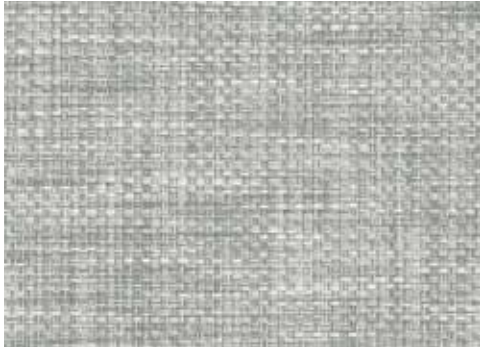
Wicker, Alloy 31105



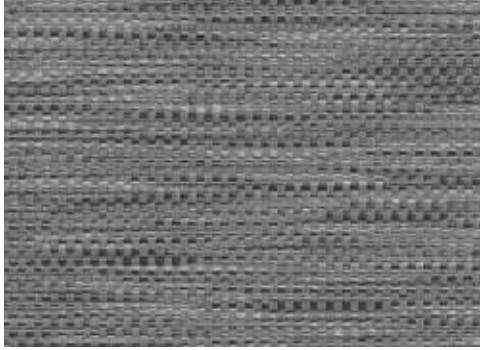
Wicker, Horizon 31074



Wicker, Mainland 17084



Wicker, Silver Mist 35071



Wicker, Tungsten 34073



**SENSATIONS**  
LIMITLESS DESIGN BY SYNTEC

# WICKER

**SPECIFICATIONS:**

Standard Width                      8' 6"  
Standard Length                    ~ 155' roll (Roll length varies)

**PERFORMANCE TESTING:**

**FVMSS & CMVSS 302 Flammability Test**  
Meets or exceeds Federal Motor Vehicle  
Safety Standard No. 302

**ASTM D-5252 Hexapod Drum Test**  
Exceeds Heavy Commercial Traffic Rating

**ASTM D-3884 Abrasion Resistance Test**  
Abrasion Resistance

**ASTM C-1028 Coefficient of Friction  
(Slip Resistance) Test**  
Slip resistant and ADA Compliant

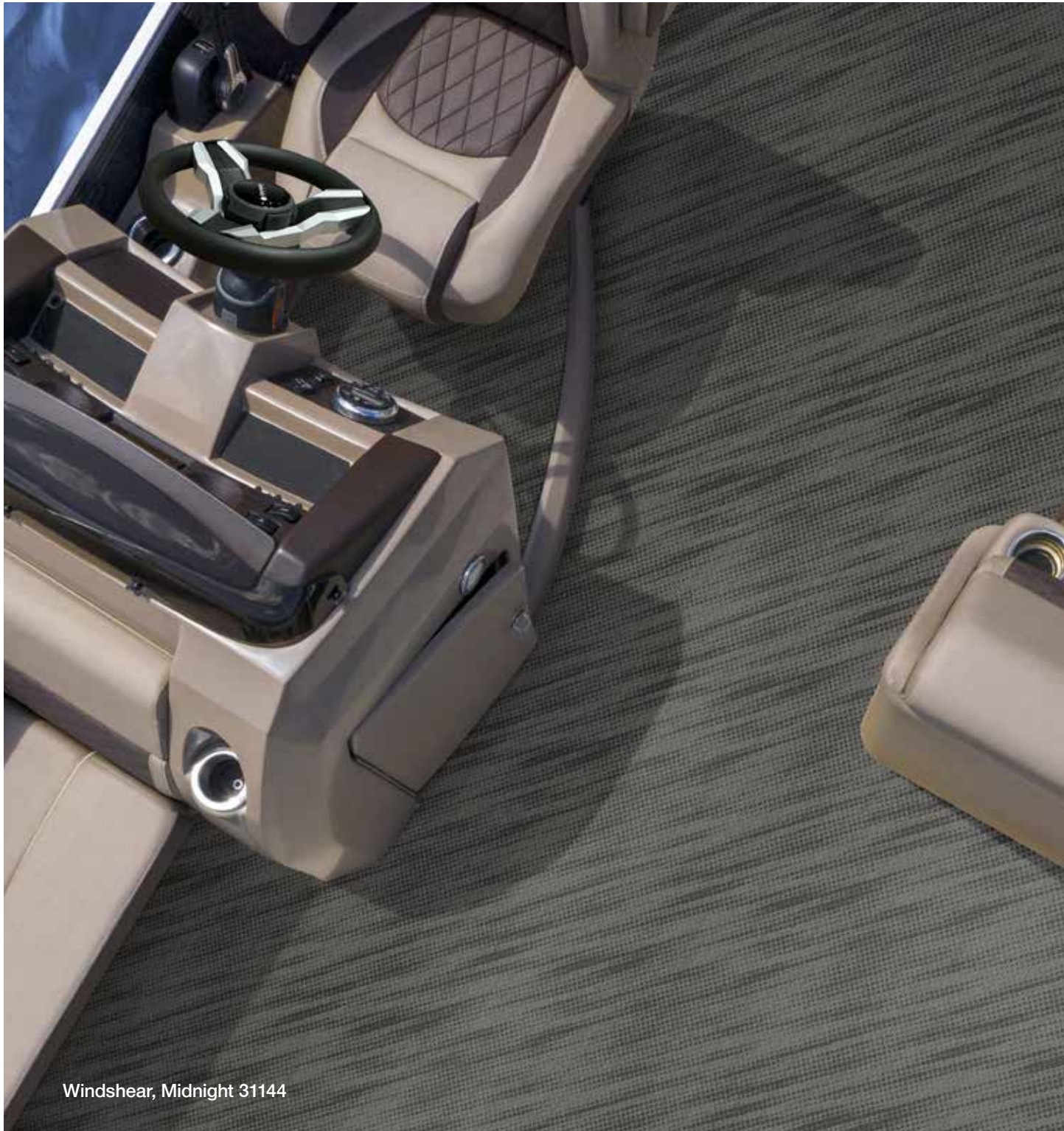
**ASTM F-925 Stain Resistance to Chemicals**  
Zero effect or staining when exposed to chemical staining test

*Created with nature's vastly unlimited inspiration, Wicker offers a relaxing interpretation of grasses, bamboo, or currents criss-crossing in the sparkling sunshine as it blows gently in the wind. Extremely versatile in decorative and functional usage! A beautiful beginning for any vehicle's interior.*

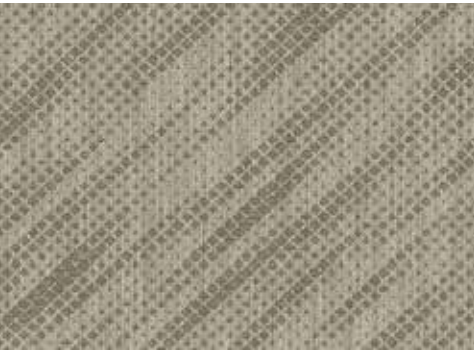


Wicker, Silver Mist 35071





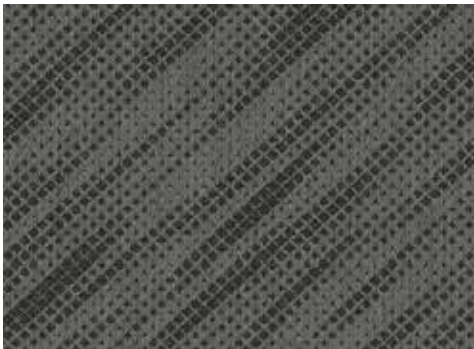
Windshear, Canyon 17140



Windshear, Canvas Tan 17141



Windshear, Cool Gray 01112



Windshear, Midnight 31144



Windshear, Reflection 35146

# WINDSHEAR

**SPECIFICATIONS:**

Standard Width 8' 6"  
Standard Length ~155' roll (Roll length varies)

**PERFORMANCE TESTING:**

**FVMSS & CMVSS 302 Flammability Test**  
Meets or exceeds Federal Motor Vehicle  
Safety Standard No. 302

**ASTM D-5252 Hexapod Drum Test**  
Exceeds Heavy Commercial Traffic Rating

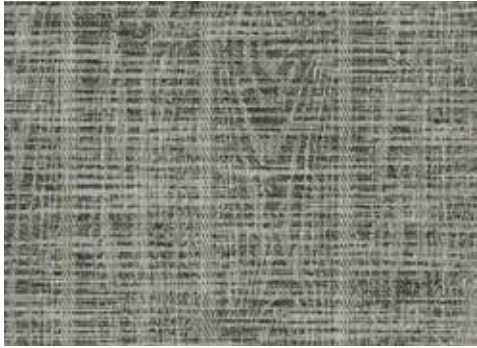
**ASTM D-3884 Abrasion Resistance Test**  
Abrasion Resistance

**ASTM C-1028 Coefficient of Friction  
(Slip Resistance) Test**  
Slip resistant and ADA Compliant

**ASTM F-925 Stain Resistance to Chemicals**  
Zero effect or staining when exposed to chemical staining test

*As its name depicts, this flooring nearly blows you away! Varying tone on tone striations meet one another at different angles. Up close it's a versatile mix of tone and pattern. From a standing view it's a chilling display of flooring artistry.*

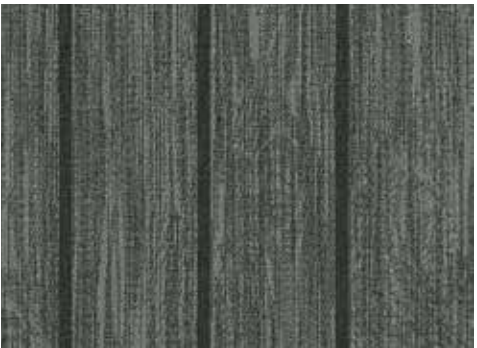




Woodland Teak, Appalachia 17106



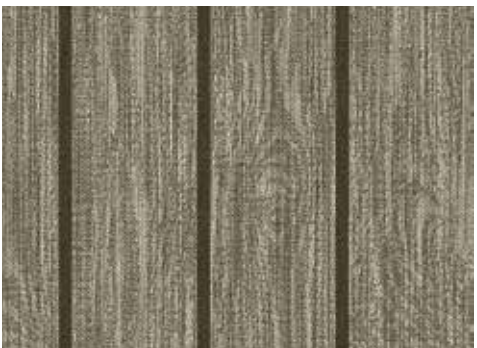
Woodland Teak, Desert Wood 17107



Woodland Teak, Grey Smoke 22001



Woodland Teak, Petrified 36001



Woodland Teak, Toasted Tan 23053



## WOODLAND TEAK

### SPECIFICATIONS:

Standard Width	8' 6"
Standard Length	~155' roll (Roll length varies)

### PERFORMANCE TESTING:

#### FVMSS & CMVSS 302 Flammability Test

Meets or exceeds Federal Motor Vehicle  
Safety Standard No. 302

#### ASTM D-5252 Hexapod Drum Test

Exceeds Heavy Commercial Traffic Rating

#### ASTM D-3884 Abrasion Resistance Test

Abrasion Resistance

#### ASTM C-1028 Coefficient of Friction (Slip Resistance) Test

Slip resistant and ADA Compliant

#### ASTM F-925 Stain Resistance to Chemicals

Zero effect or staining when exposed to chemical staining test

*The look of beautiful woodgraining in a soft and durable woven wonder. Our variegated woven mastery creates tonal patterns with outstanding qualities in decorative choices, soil and spill concealment, and functional durability.*



Woodland Teak, Grey Smoke 22001





For a complete product catalog, scan this code or visit [syntecind.com](https://syntecind.com).

800-526-8428  
[syntecinfo@syntecind.com](mailto:syntecinfo@syntecind.com)  
438 Lavender Drive  
Rome, GA 30165  
© Copyright 2023 | Syntec Industries, Inc.

